

8 7 6 5 4 3 2 1

D

C

B

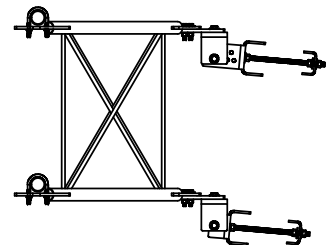
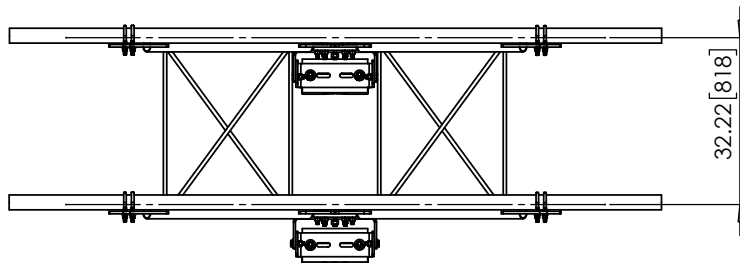
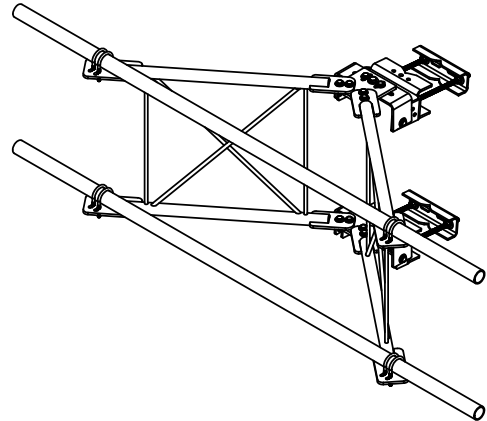
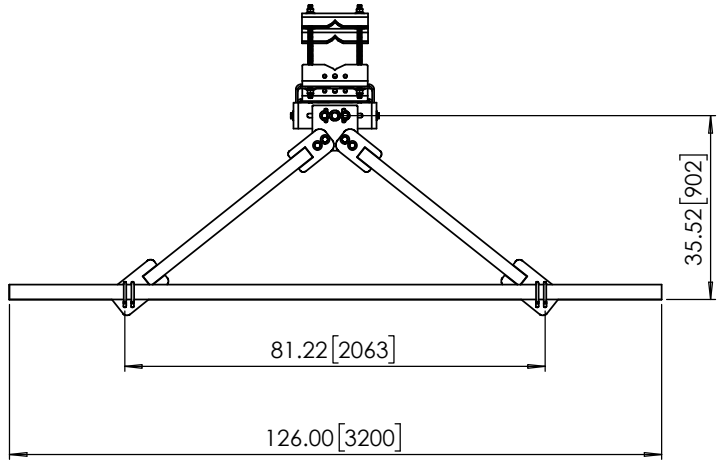
A

D

C

B

A



KENWOOD
TELECOM

3431 Novis Pointe Acworth, Ga 30101
(770) 975-0500 office (770) 974-5100 fax

UNLESS OTHERWISE SPECIFIED:
DIMENSIONS ARE IN INCHES
TOLERANCES:
FRACTIONAL: ± 1/32
ANGULAR: ± 2°
ONE PLACE DECIMAL: ± .06
TWO PLACE DECIMAL: ± .03
THREE PLACE DECIMAL: ± .010
INTERPRET GEOMETRIC
TOLERANCING PER:
MATERIAL:
FINISH:
DO NOT SCALE DRAWING

DRAWN	KAR	DATE	9/16/21
CHECKED			
ENG APPR.			
MFG APPR.			

PROPRIETARY AND CONFIDENTIAL

THE INFORMATION CONTAINED IN THIS DRAWING IS THE SOLE PROPERTY OF KENWOOD TELECOM. ANY REPRODUCTION IN PART OR AS A WHOLE WITHOUT THE WRITTEN PERMISSION OF KENWOOD TELECOM IS PROHIBITED.

TITLE: Sector Frame - 3' Standoff, 10'6" Face, All Pipe Version	
SIZE B	DWG. NO. T167xKTV10
SCALE: 1:16	FINISHED WEIGHT: SHEET 2 OF 2
REV A	

8 7 6 5 4 3 2 1

8 7 6 5 4 3 2 1

ITEM NO.	PART NUMBER	DESCRIPTION	QTY.
1	K1120KT9	Pivot Plate (Heavy 10 & WLL)	2
2	K1029KT212	A325 5/8"x2-1/2" kit (4 ea)	3
3	K1032KT212-2	3/4"X2-1/2" fastener kit A325 HDG (2)	1
4	K7940KT14-2	U-bolt kit, 2-7/8" OD pipe (2-Ubolt)	4

Connection Point B:
Pivot Plate(slots) to Taper Adjustment
Use Item #3, **5/8" x 2-1/2" Bolt Kits**

Connection Point C:
Pivot Plate to Standoff Weldments
Use Item #2, **5/8" x 2-1/2" Bolt Kits**

Stiff Arm Assembly
T1307KT12
T1307KT1512

Leg Clamp Kits
K1672KT-T

Connection Point A:
Pivot Plate(Hole) to Taper Adjustment
Use Item #4, **3/4" x 2-1/2" Bolt Kits**

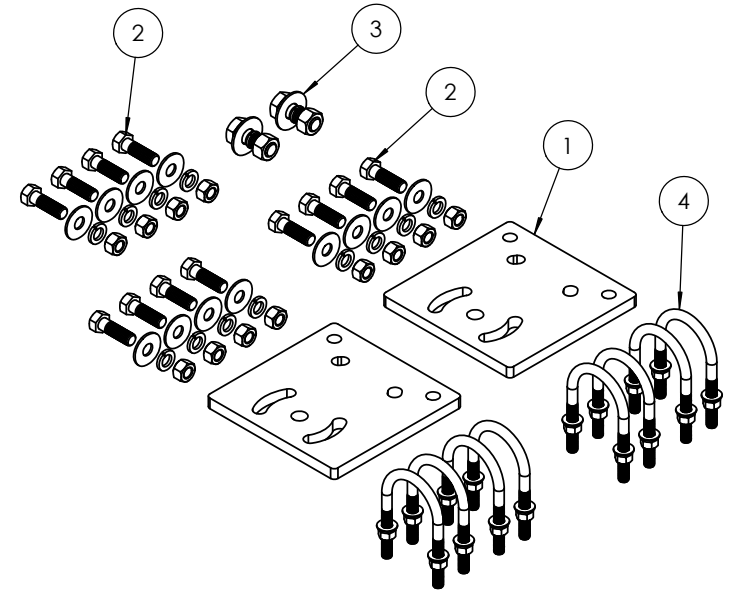
Leg Clamp Kits
K1672KT-B

2-7/8" OD Face Pipes

Crossover Kits
T1709KT11A

2-7/8" OD Antenna Pipes
Sold Separately

Connection Point F:
Face Pipe to Frame
Use Item #4, **1/2" U-bolts** for
2-7/8"OD Pipe



KENWOOD TELECOM
3431 Novis Pointe Acworth, Ga 30101
(770) 975-0500 office (770) 974-5100 fax

UNLESS OTHERWISE SPECIFIED:
DIMENSIONS ARE IN INCHES
TOLERANCES:
FRACTIONAL: ± 1/32
ANGULAR: ± 2°
ONE PLACE DECIMAL: ± .06
TWO PLACE DECIMAL: ± .03
THREE PLACE DECIMAL: ± .010
INTERPRET GEOMETRIC TOLERANCING PER:
MATERIAL:
FINISH:
DO NOT SCALE DRAWING

NAME	DATE
KAR	9/16/21
CHECKED	
ENG APPR.	
MFG APPR.	

PROPRIETARY AND CONFIDENTIAL
THE INFORMATION CONTAINED IN THIS DRAWING IS THE SOLE PROPERTY OF KENWOOD TELECOM. ANY REPRODUCTION IN PART OR AS A WHOLE WITHOUT THE WRITTEN PERMISSION OF KENWOOD TELECOM IS PROHIBITED.

KENWOOD TELECOM
TITLE:
**Hardware Kit for Sector Frame,
All Pipe Sector Frame**
SIZE DWG. NO. REV
K1672KTV-HW A
SCALE: 1:6 FINISHED WEIGHT: SHEET 1 OF 1

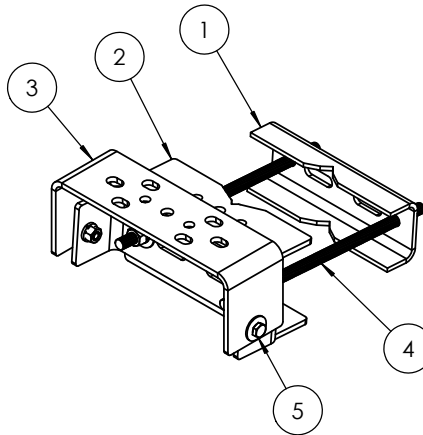
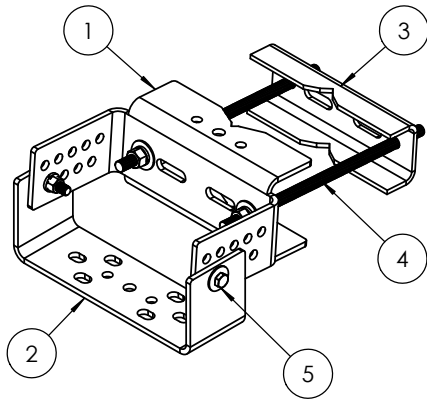
REVISIONS

REV.	DESCRIPTION	DATE	APPROVED
A	Added Ubolts for revised standoff	9/13/2022	KAR

8 7 6 5 4 3 2 1

K1672KT-T

ITEM NO.	PART NUMBER	DESCRIPTION	K1672KT-T/QTY.
1	K1672KT-01F	Leg Channel Top Clamp, Formed	1
2	K1672KT-02	Taper Adjustment Connector	1
3	K1672KT-04	Leg Channel, Inner (Heavys)	1
4	K2320KT18iA-2	Threaded rod kit 3/4" x 18" (2) HDG B7"	1
5	K1029KT214-2	Bolt kit (2) - 5/8" x 2-1/4" A325 HDG	1



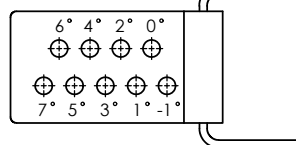
K1672KT-B

ITEM NO.	PART NUMBER	DESCRIPTION	K1672KT-B/QTY.
1	K1672KT-04	Leg Channel, Inner (Heavys)	1
2	K1672KT-03F	Leg Channel Bottom Clamp, Formed	1
3	K1672KT-02	Taper Adjustment Connector	1
4	K2320KT18iA-2	Threaded rod kit 3/4" x 18" (2) HDG B7"	1
5	K1029KT214-2	Bolt kit (2) - 5/8" x 2-1/4" A325 HDG	1

NOTES:

Fits Leg: Round 1-1/2" OD to 8-1/2" OD
 60 Degree Angle 2" to 8-1/2"
 90 Degree Angle 2" to 6"

All fasteners should be tightened to "snug tight" per AISC 6.5.2.



Taper Adjustment



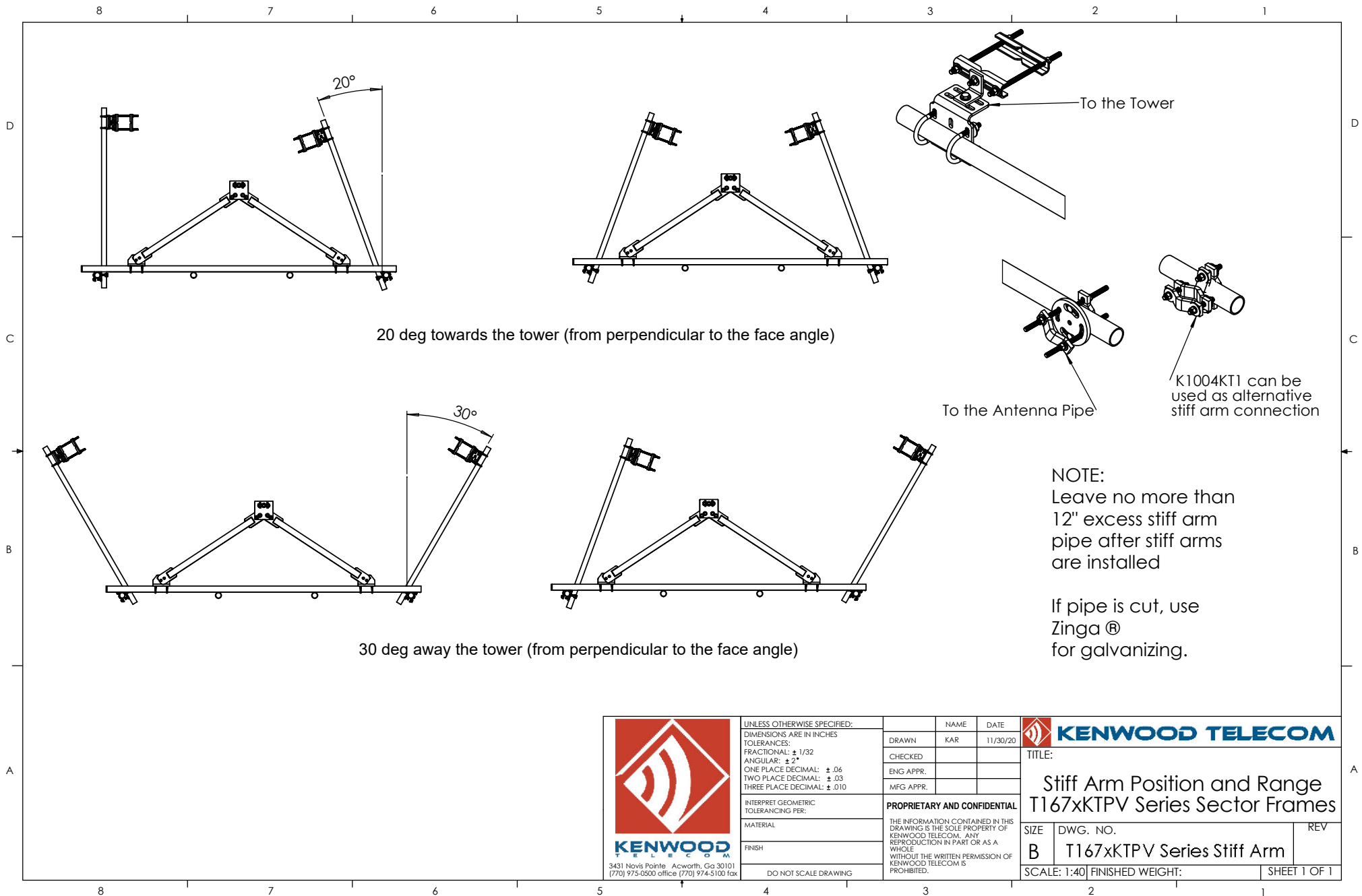
UNLESS OTHERWISE SPECIFIED:
 DIMENSIONS ARE IN INCHES
 TOLERANCES:
 FRACTIONAL: ± 1/32
 ANGULAR: ± 2°
 ONE PLACE DECIMAL: ± .06
 TWO PLACE DECIMAL: ± .03
 THREE PLACE DECIMAL: ± .010
 INTERPRET GEOMETRIC TOLERANCING PER:
 MATERIAL:
 FINISH:
 DO NOT SCALE DRAWING

NAME: KAR DATE: 1/10/20
 DRAWN: KAR
 CHECKED:
 ENG APPR.:
 MFG APPR.:
 PROPRIETARY AND CONFIDENTIAL
 THE INFORMATION CONTAINED IN THIS DRAWING IS THE SOLE PROPERTY OF KENWOOD TELECOM. ANY REPRODUCTION IN PART OR AS A WHOLE WITHOUT THE WRITTEN PERMISSION OF KENWOOD TELECOM IS PROHIBITED.

KENWOOD TELECOM

TITLE:
 Sector Frame Leg Clamp Assembly for T1671KT Sector Frames Taper Leg

SIZE: B	DWG. NO.: K1672KT-T/K1672KT-B	REV: E
SCALE: 1:8 FINISHED WEIGHT:		SHEET 1 OF 1



UNLESS OTHERWISE SPECIFIED:
DIMENSIONS ARE IN INCHES
TOLERANCES:
FRACTIONAL: ± 1/32
ANGULAR: ± 2°
ONE PLACE DECIMAL: ± .06
TWO PLACE DECIMAL: ± .03
THREE PLACE DECIMAL: ± .010

INTERPRET GEOMETRIC TOLERANCING PER:

MATERIAL

FINISH

DO NOT SCALE DRAWING

NAME	DATE
DRAWN KAR	11/30/20
CHECKED	
ENG APPR.	
MFG APPR.	

PROPRIETARY AND CONFIDENTIAL

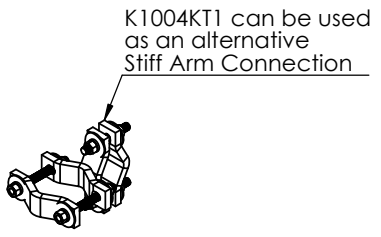
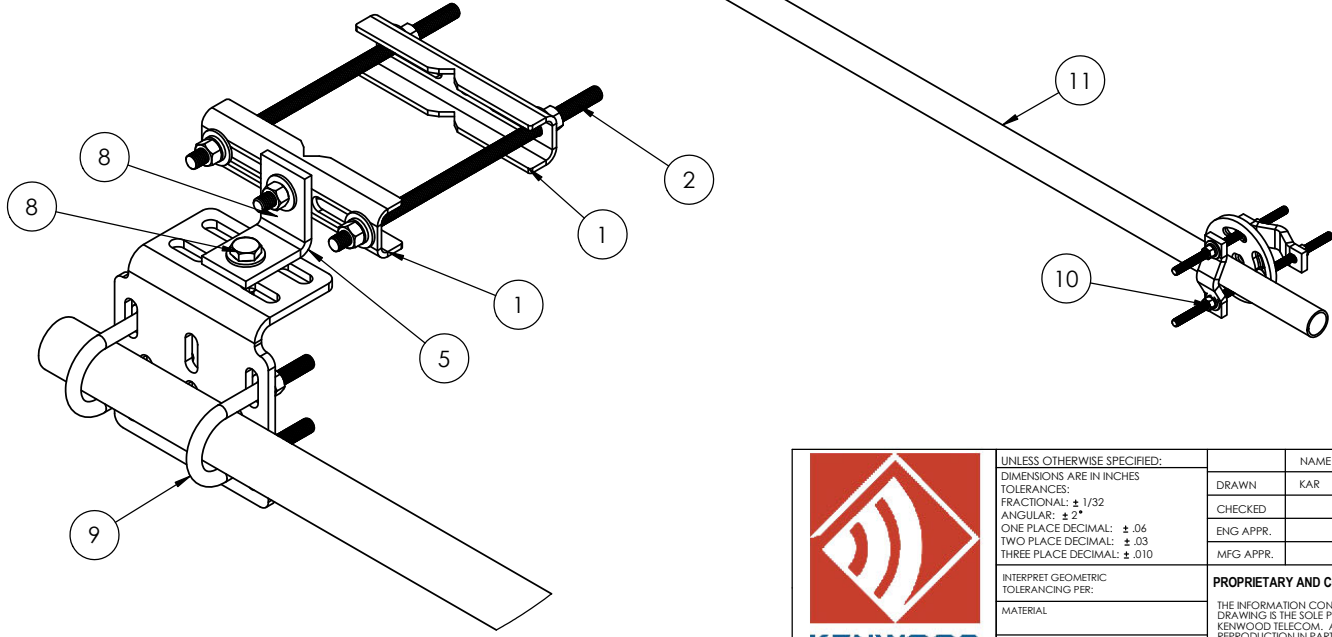
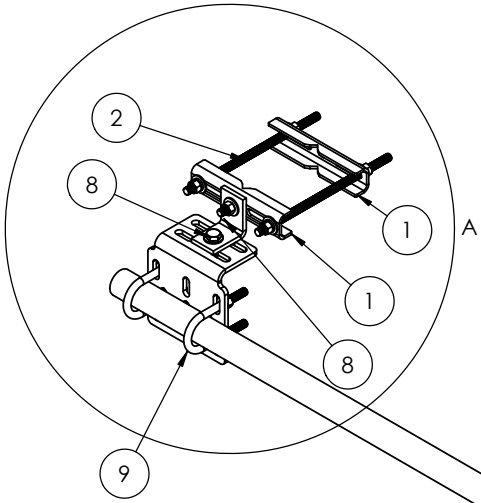
THE INFORMATION CONTAINED IN THIS DRAWING IS THE SOLE PROPERTY OF KENWOOD TELECOM. ANY REPRODUCTION IN PART OR AS A WHOLE WITHOUT THE WRITTEN PERMISSION OF KENWOOD TELECOM IS PROHIBITED.

KENWOOD TELECOM

TITLE:
**Stiff Arm Position and Range
T167xKTPV Series Sector Frames**

SIZE B	DWG. NO. T167xKTPV Series Stiff Arm	REV
SCALE: 1:40		FINISHED WEIGHT:
		SHEET 1 OF 1

ITEM NO.	PART NUMBER	DESCRIPTION	QTY.
1	K1325KT-01	Stiff Arm Channel bracket	2
2	K2120KT12i	Threaded rod stud, 1/2"x 12" HDG	2
3	H3002KT12G	Lock washer, 1/2" HDG	6
4	H2002KT12GA3	Nut, hex heavy 1/2" HDG A325	6
5	K9970KT-95	Corner, Clip; 3 x 3 x 3/16; 2" long	1
6	H3012KT12GSAE	Flat washer, hardened, 1/2", SAE, HDG	6
7	K1708KT35	Crossover angle mount, 2-3/8" thru 2-7/8"	1
8	H1026KT134GA3	Bolt, 1/2"x1-3/4" HH(A325) HDG	2
9	K7940KT9-1	U-bolt kit 1-7/8 OD pipe 1 u-bolt	2
10	K1004KT6	Adjust Angle Xover Kit, 1-1/2"-3-1/2" OD	1
11	PO100KT12.5	Pipe 1-7/8 OD x 12.5 L HDG A500/B Sch 40	1



UNLESS OTHERWISE SPECIFIED:
 DIMENSIONS ARE IN INCHES
 TOLERANCES:
 FRACTIONAL: ± 1/32
 ANGULAR: ± 2°
 ONE PLACE DECIMAL: ± .06
 TWO PLACE DECIMAL: ± .03
 THREE PLACE DECIMAL: ± .010

INTERPRET GEOMETRIC TOLERANCING PER:
 MATERIAL:
 FINISH:
 DO NOT SCALE DRAWING

NAME	DATE
DRAWN KAR	9/21/21
CHECKED	
ENG APPR.	
MFG APPR.	

PROPRIETARY AND CONFIDENTIAL

THE INFORMATION CONTAINED IN THIS DRAWING IS THE SOLE PROPERTY OF KENWOOD TELECOM. ANY REPRODUCTION IN PART OR AS A WHOLE WITHOUT THE WRITTEN PERMISSION OF KENWOOD TELECOM IS PROHIBITED.

TITLE:
**Universal Stiff arm hardware kit,
 W/ 1-7/8" OD pipe**

SIZE B	DWG. NO. T1307KT1512	REV -
-----------	--------------------------------	----------

SCALE: 1:8 FINISHED WEIGHT: 51.64 SHEET 1 OF 1

8 7 6 5 4 3 2 1

D

C

B

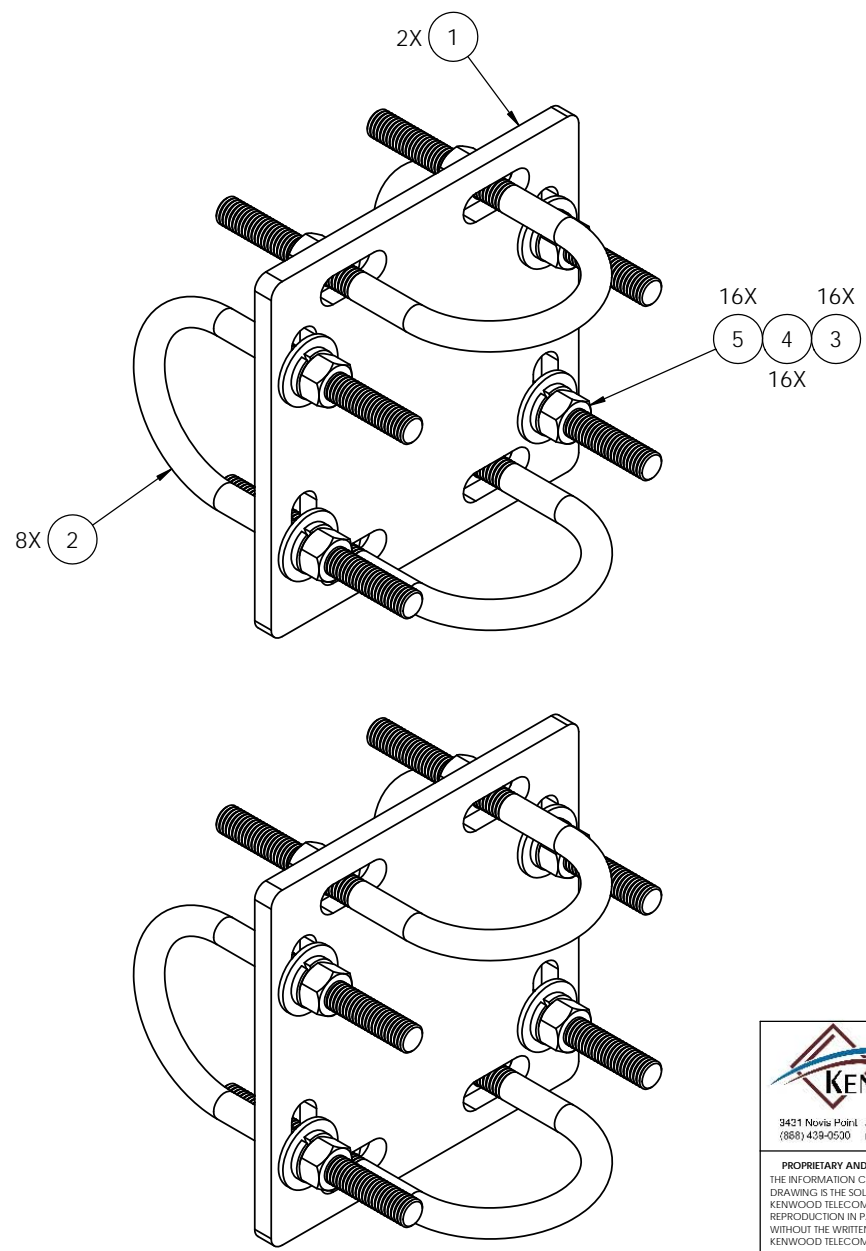
A

D


C

B

A



ITEM NO.	PART NUMBER	DESCRIPTION	QTY.
1	K1709KT	Crossover plate, 1-7/8" - 3-1/2"	2
2	H7940KT14	U-Bolt, 1/2-13; 5-3/4" Lng; 2-15/16" IL; 3" Thd; HDG	8
3	H3012KT12GSAE	Flat washer, 1/2", SAE (A325), HDG	16
4	H3002KT12G	Lock washer, 1/2" HDG	16
5	H2002KT12GA3	Nut, 1/2" HH, HDG (A325)	16

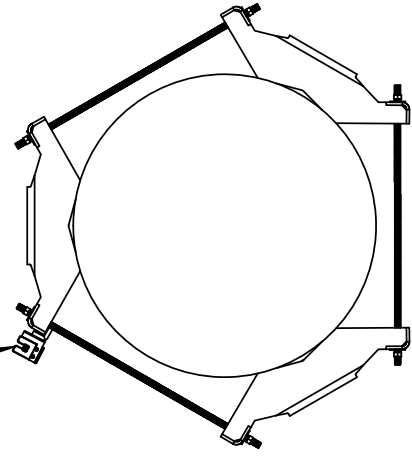
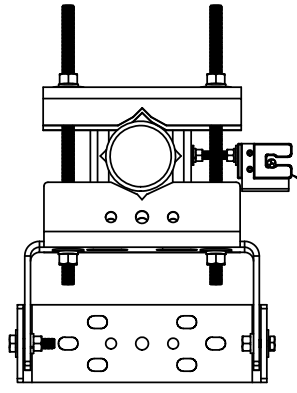
 KENWOOD TELECOM 3421 Novia Point, Auckland, GA 30101 (868) 438-0500 (770) 974-5100 fax	UNLESS OTHERWISE SPECIFIED:		NAME		DATE		KENWOOD TELECOM		
	DIMENSIONS ARE IN INCHES		DRAWN	PO	12/3/14				TITLE: Crossover Plate Kit $\phi 2-7/8" - \phi 2-7/8"$
	TOLERANCES:		CHECKED						
	FRACTIONAL: $\pm 1/32$		ENG APPR.						
ANGULAR: $\pm 2^\circ$		MFG APPR.							
ONE PLACE DECIMAL: $\pm .06$		Q.A.					SIZE		
TWO PLACE DECIMAL: $\pm .03$		COMMENTS:				DWG. NO.			
THREE PLACE DECIMAL: $\pm .010$						T1709KT11A			
INTERPRET GEOMETRIC TOLERANCING PER:						REV			
MATERIAL						SCALE: 1:2			
FINISH						FINISHED WEIGHT: 15.99			
DO NOT SCALE DRAWING						SHEET 1 OF 1			

8 7 6 5 4 3 2 1

8 7 6 5 4 3 2 1

D

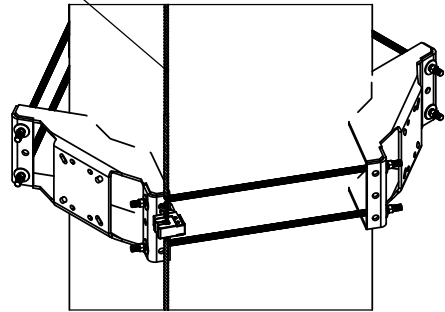
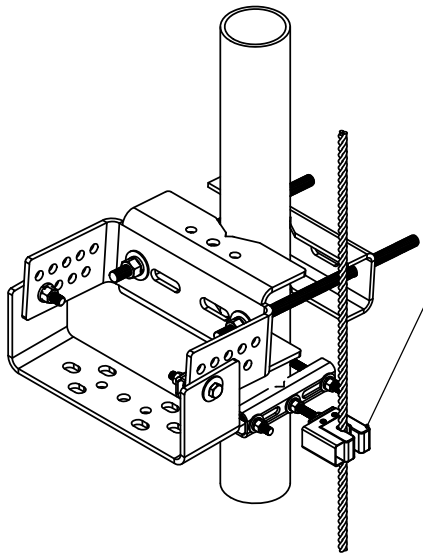
D



Position mount or adjust safety climb cable so not to hinder or damage or trap or obstruct the safety climb. Safety cable routing bracket may be purchased separately. Supplied by others.

C

C





B

B

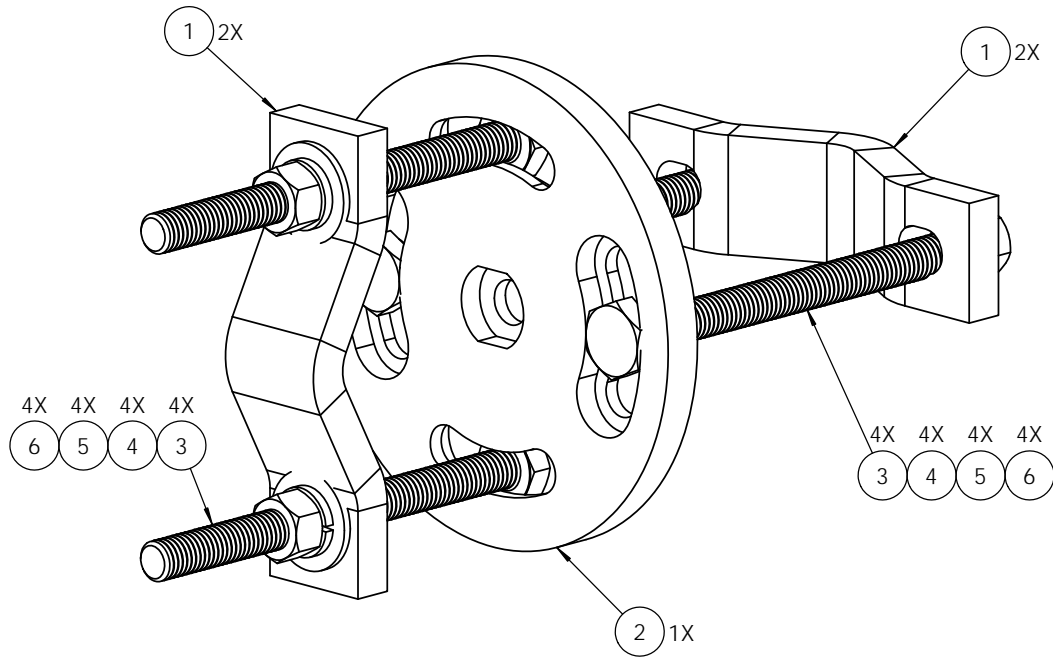
A



A

 KENWOOD TELECOM <small>3431 Novis Pointe Acworth, Ga 30101 (770) 975-0500 office (770) 974-5100 fax</small>	UNLESS OTHERWISE SPECIFIED: DIMENSIONS ARE IN INCHES TOLERANCES: FRACTIONAL: ± 1/32 ANGULAR: ± 2° ONE PLACE DECIMAL: ± .06 TWO PLACE DECIMAL: ± .03 THREE PLACE DECIMAL: ± .010		NAME KAR	DATE 2/10/21	 KENWOOD TELECOM TITLE: <h2 style="text-align: center;">Safety Climb Information</h2>	
	INTERPRET GEOMETRIC TOLERANCING PER:		DRAWN KAR	CHECKED		SIZE 1:8
	MATERIAL:		ENG APPR.	MFG APPR.		DWG. NO. Safety Climb
	FINISH:		PROPRIETARY AND CONFIDENTIAL <small>THE INFORMATION CONTAINED IN THIS DRAWING IS THE SOLE PROPERTY OF KENWOOD TELECOM. ANY REPRODUCTION IN PART OR AS A WHOLE WITHOUT THE WRITTEN PERMISSION OF KENWOOD TELECOM IS PROHIBITED.</small>			REV -
DO NOT SCALE DRAWING				SCALE: 1:8	FINISHED WEIGHT: SHEET 1 OF 1	

8 7 6 5 4 3 2 1

ITEM NO.	PART NUMBER	DESCRIPTION	QTY.
1	K1000KT6	Clamp Half. 1-1/2" x 5-7/8" x 1/2"	2
2	K1709KTR	Crossover Plate, Round Multi-angle	1
3	H1026KT6GB7F	Bolt, 1/2"x6", hex head, cap, A193 B7	4
4	H3012KT12GSAE	Flat washer, hardened, 1/2", SAE, HDG	4
5	H3002KT12G	Lock washer, 1/2" HDG	4
6	H2002KT12GA3	Nut, hex heavy 1/2" HDG A325	4



 <p>KENWOOD TELECOM</p> <p>3431 Novis Pointe Acworth, Ga 30101 (770) 975-0500 office, (770) 974-5100 fax</p>	UNLESS OTHERWISE SPECIFIED: DIMENSIONS ARE IN INCHES TOLERANCES: FRACTIONAL: ± 1/32 ANGULAR: ± 2° ONE PLACE DECIMAL: ± .06 TWO PLACE DECIMAL: ± .03 THREE PLACE DECIMAL: ± .010	NAME: KAR DATE: 1/25/17	 KENWOOD TELECOM		
	INTERPRET GEOMETRIC TOLERANCING PER:	DRAWN: KAR CHECKED:		TITLE: Adjustable Angle Crossover Plate Kit 1-1/2"OD - 3-1/2" OD	
	MATERIAL: FINISH:	PROPRIETARY AND CONFIDENTIAL THE INFORMATION CONTAINED IN THIS DRAWING IS THE SOLE PROPERTY OF KENWOOD TELECOM. ANY REPRODUCTION IN PART OR AS A WHOLE WITHOUT THE WRITTEN PERMISSION OF KENWOOD TELECOM IS PROHIBITED.		ENG APPR.: MFG APPR.:	SIZE: DWG. NO. K1004KT6 REV B
	DO NOT SCALE DRAWING	SCALE: 1:2		FINISHED WEIGHT: 5.84	SHEET 1 OF 1